

A close-up photograph of a pair of weathered, brown hands cupping a small amount of dark soil. A young green plant with several leaves and a thin stem is growing out of the soil. The background is a blurred, textured surface, possibly a wooden wall or a piece of fabric. The overall tone is warm and focused on the act of nurturing life.

WE'RE THIRD APPROACH

www.thirdapproach.co.uk

Have You

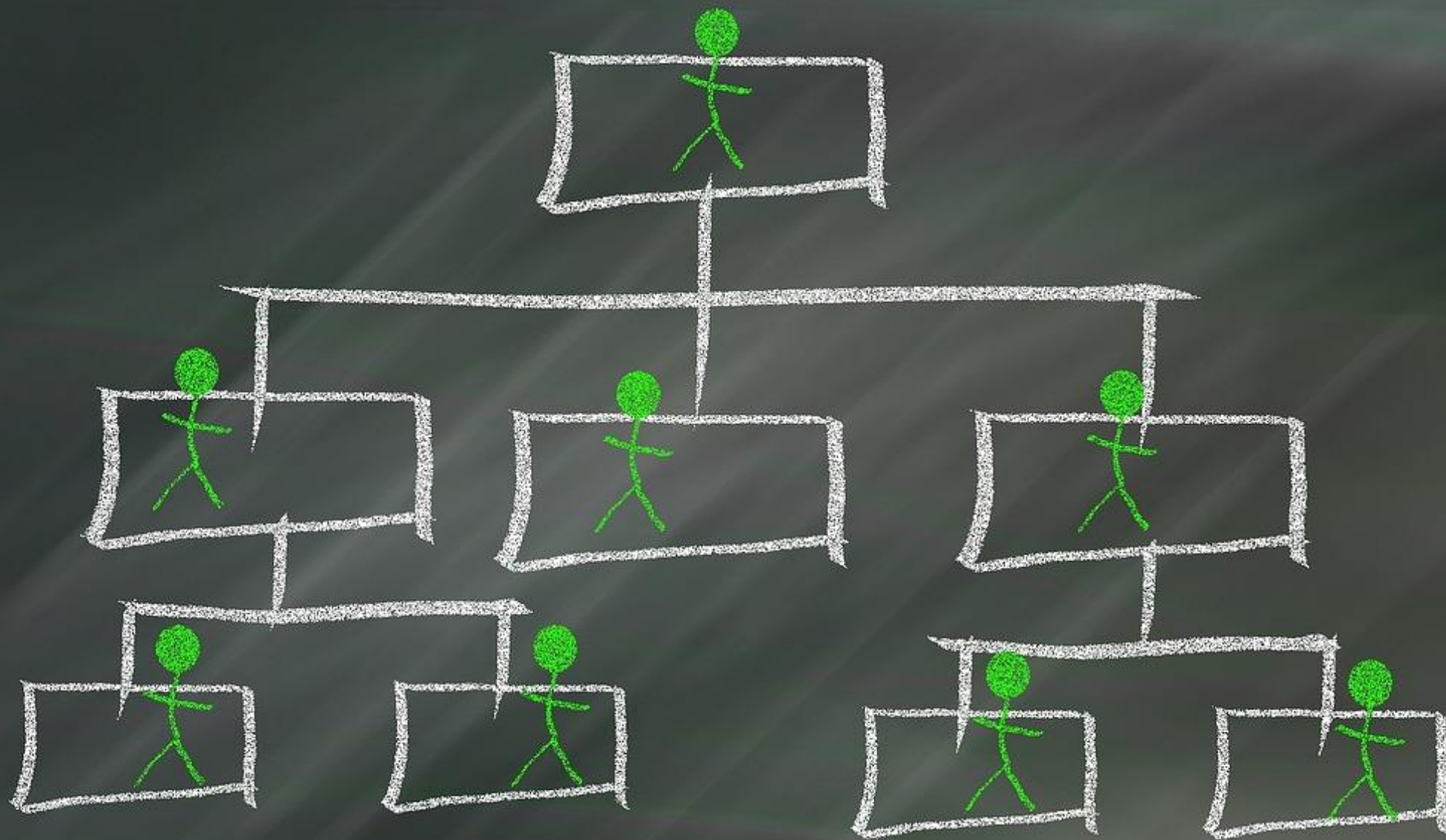
Got The

Organisation

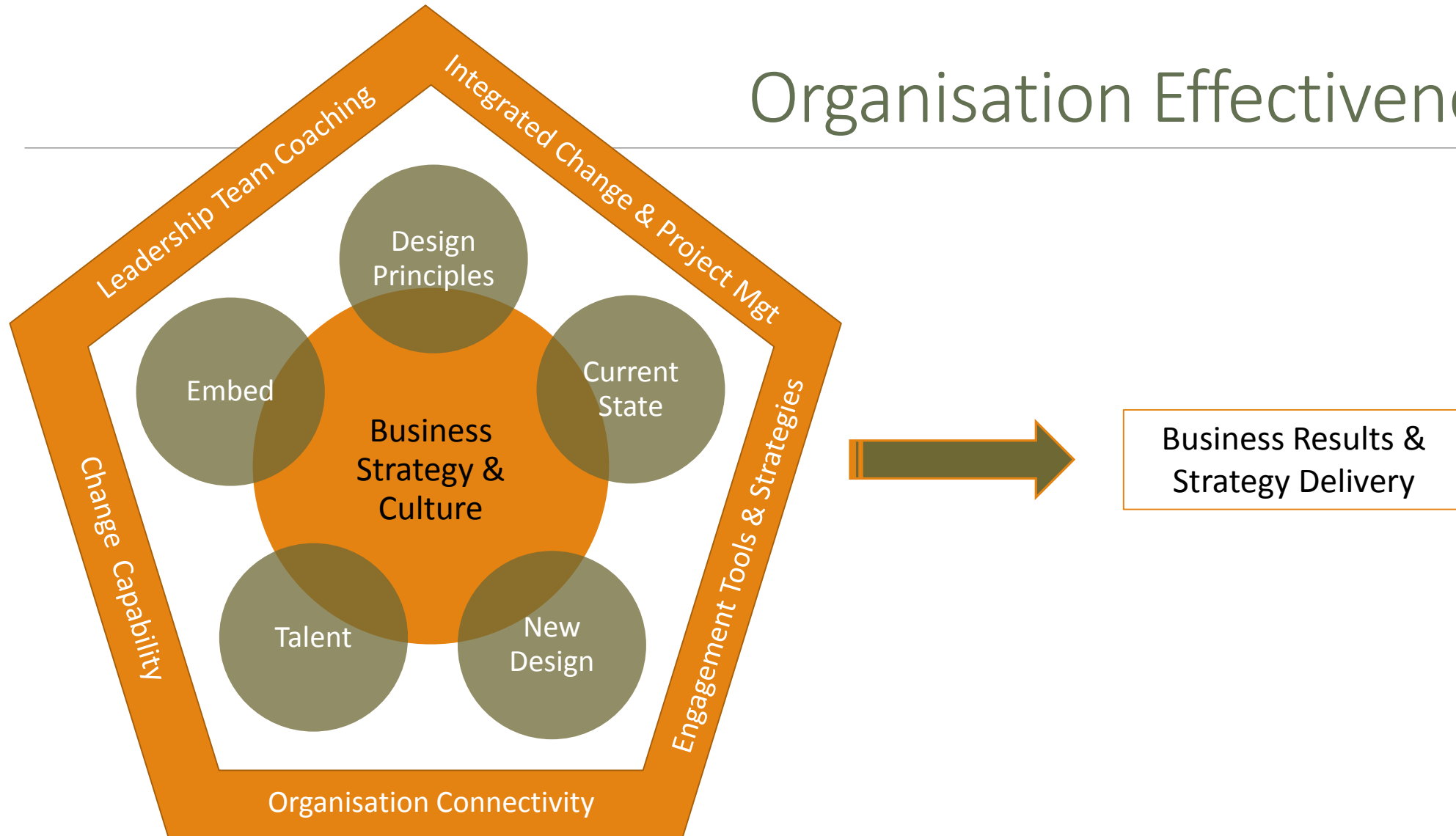
To Deliver

Your

Strategy?



Organisation Effectiveness

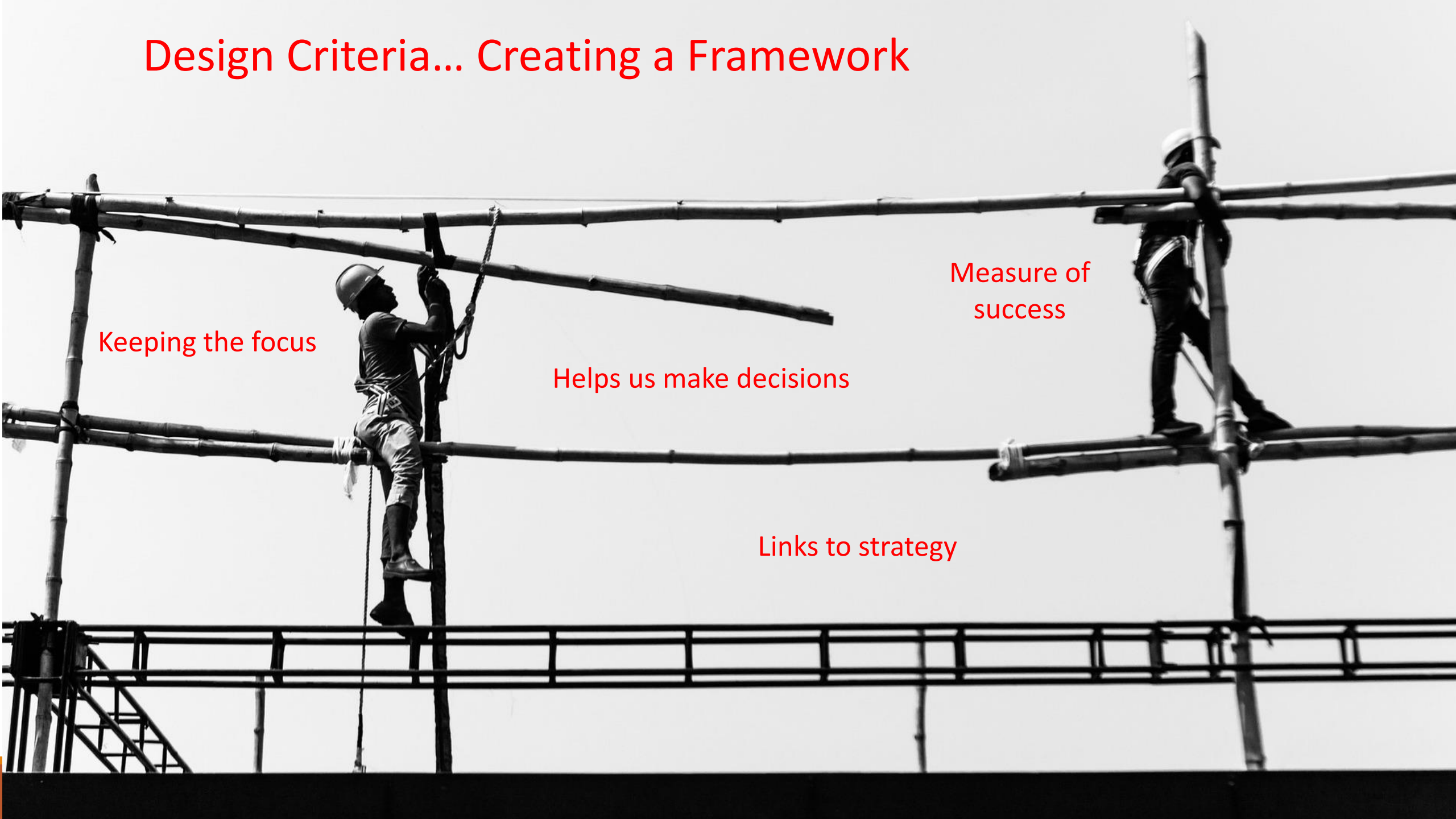




Why?

What?

Design Criteria... Creating a Framework



Keeping the focus

Helps us make decisions

Measure of success

Links to strategy



Criteria	
The right level / pitch of leadership roles to drive the strategy	
Enable all roles to have direct line of sight into the strategy	Few layers Clarity of role
Allow us to transform our business and then continue to develop at a fast pace to be amongst the front runners	Leadership and structure in IS to adapt to meet the needs of new members – define the top tier role. Ensure have change capabilities and structure to deliver and drive transformation and continue at fast pace
Clear accountability for the acquisition and engagement of new target members	External / outward facing views. Digital strategy and mobile focus, product & service need. Identify where the responsibility sits at ET level. Drive and coordinate across the business
Continue to deliver an excellent member experience	All areas of the business – cross departmental influence / touch points External view
Be structurally efficient	



Scalable

Clear & Simple

Allows progression

External / Customer focussed

Organised around Supply Chain / Project flow

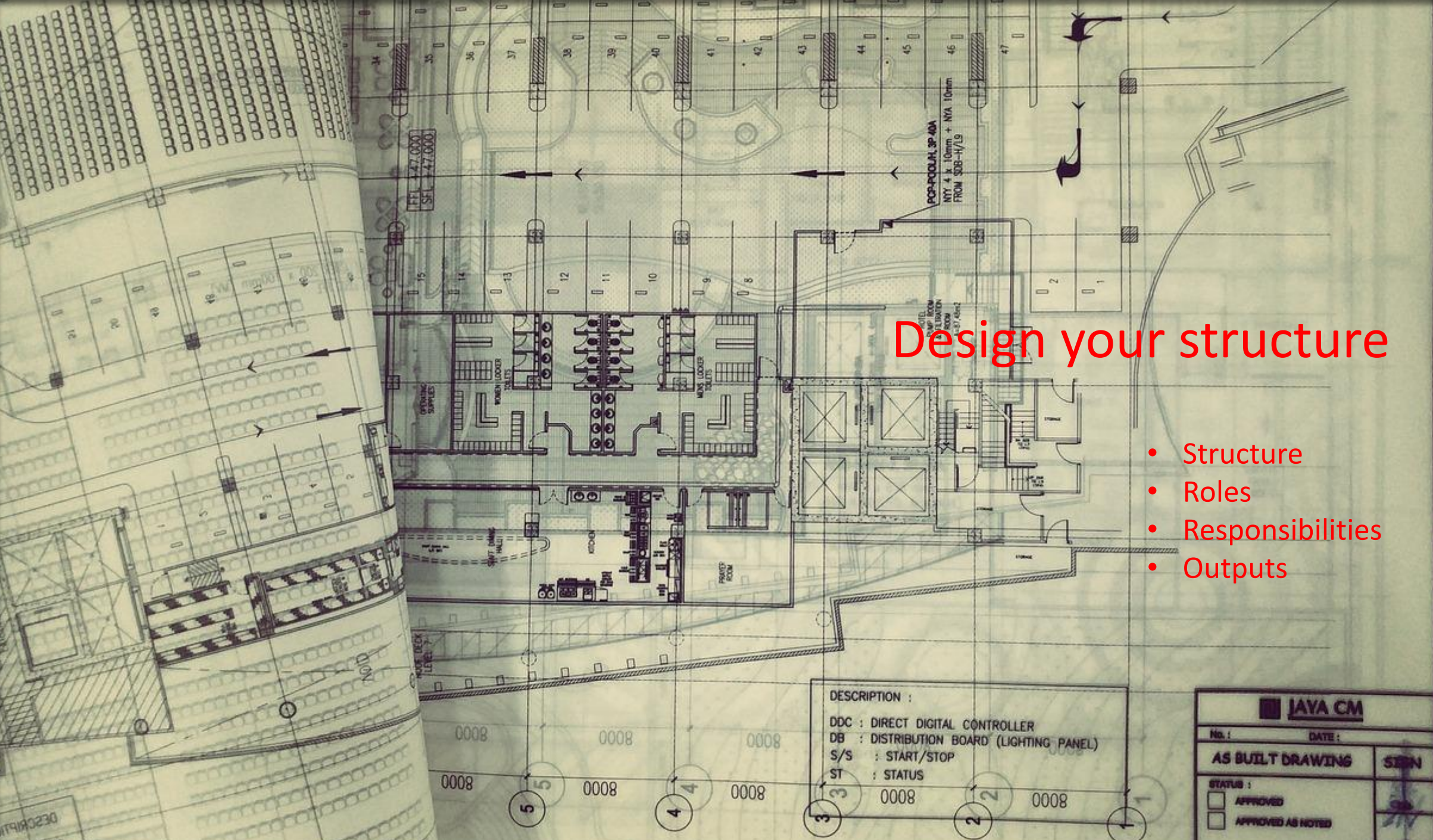
Gap analysis against the strategy

Capabilities

Change Readiness

Culture





Design your structure

- Structure
- Roles
- Responsibilities
- Outputs

DESCRIPTION :

DDC : DIRECT DIGITAL CONTROLLER
DB : DISTRIBUTION BOARD (LIGHTING PANEL)
S/S : START/STOP
ST : STATUS

JAYA CM	
No. :	DATE :
AS BUILT DRAWING	
STATUS :	SEEN
<input type="checkbox"/> APPROVED	[Signature]
<input type="checkbox"/> APPROVED AS NOTED	

MAIN CONTRACTOR

PP

KNOW BY

DATE

DRAWN BY

DATE

DIRECT CONTRACTOR

ozbil

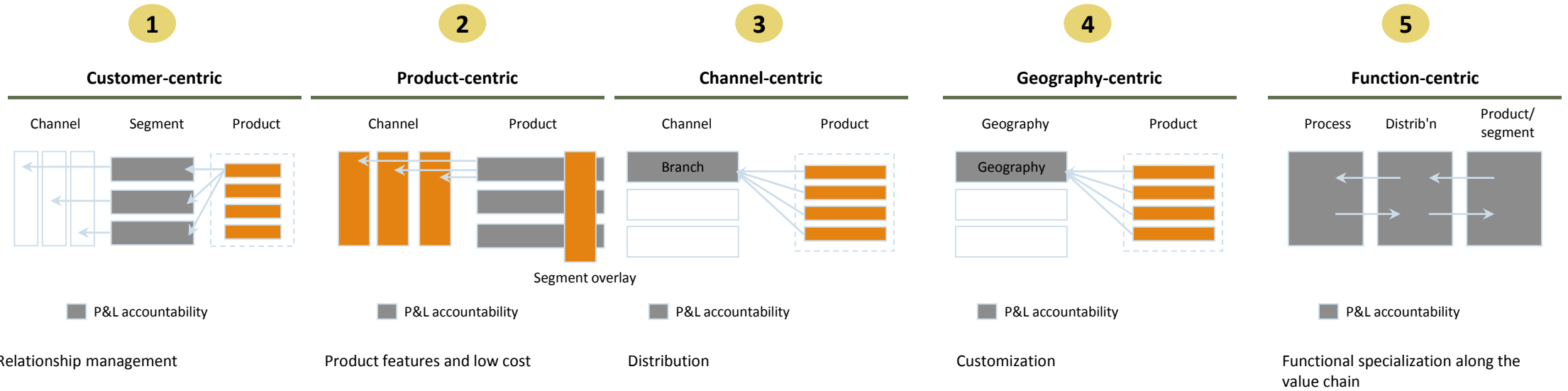
PT. AZBIL B

PROPOSED BY

DATE

DRAWING TITLE :

Five most commonly observed designs



Typical source of advantage

Build!

A photograph of a construction site. In the foreground, there are several vertical red metal columns and a white corrugated metal structure. In the middle ground, there is a complex network of blue metal scaffolding. Several construction workers wearing yellow hard hats and blue safety vests are visible working on the scaffolding. In the background, there are concrete walls and more scaffolding. Two large, white, dome-shaped lights are suspended from the scaffolding in the middle ground. The overall scene is busy and industrial.

Capabilities

Talent

Skills

Leadership

Connectivity

Readiness



Running Your House Smoothly



Managing Your Build





A close-up photograph of a pair of weathered, brown hands cupping a small, vibrant green plant growing from dark soil. The plant has several serrated leaves and a thin stem with a small bud at the top. The background is a blurred, textured surface, possibly a wooden wall or a piece of fabric. The overall tone is warm and focused on the act of nurturing life.

WE'RE THIRD APPROACH

www.thirdapproach.co.uk