



Building the Sizewell C Supply Chain

Down Hall, Hertfordshire

5th September 2023

www.sizewellcsupplychain.co.uk



Sizewell C
The power of **good for Britain**



UPCOMING EVENTS



**SIZEWELL C
SUPPLY CHAIN**
CONNECTING BUSINESS TO OPPORTUNITY



SEPTEMBER CHAMBER LUNCH

THURSDAY 21ST SEPTEMBER, 11:45 – 14:15, AT AUBREY PARK HOTEL

MEET & LEARN HOW HERTS CHAMBER MEMBERSHIP CAN SUPPORT YOUR BUSINESS!

TUESDAY 3RD OCTOBER, 08:30 - 10:30, AT STEVENAGE FOOTBALL CLUB

HERTFORDSHIRE ZERO CARBON CONFERENCE

FRIDAY 6TH OCTOBER, 09:00 – 15:45, AT ROTHAMSTED CONFERENCE CENTRE

FEEDBACK HERE!





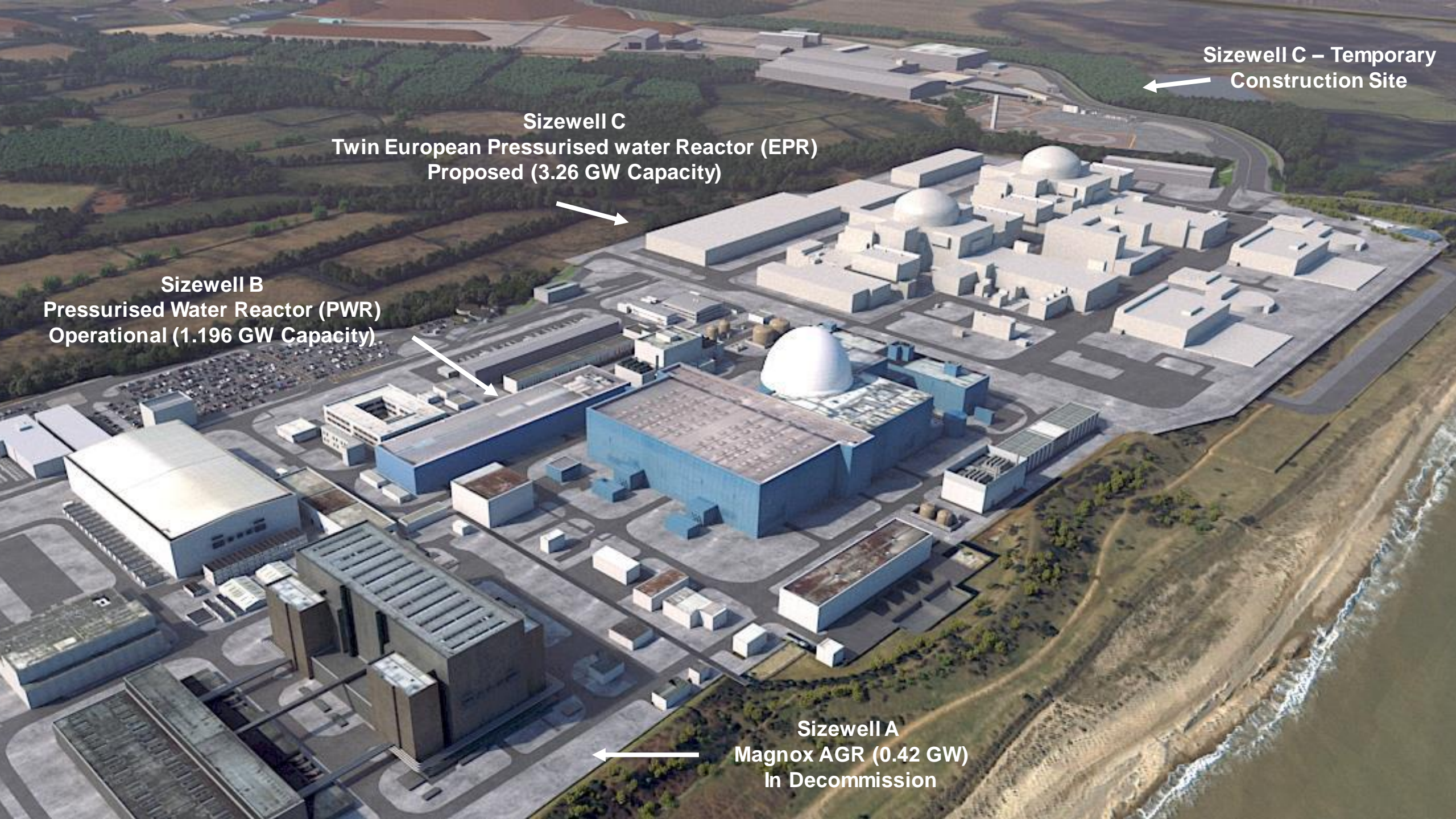
Building the Sizewell C Supply Chain

Ashley Shorey-Mills
Head of Sizewell C Supply
Chain Engagement

Suffolk Chamber of
Commerce

www.sizewellcsupplychain.co.uk





Sizewell C – Temporary Construction Site

Sizewell C
Twin European Pressurised water Reactor (EPR)
Proposed (3.26 GW Capacity)

Sizewell B
Pressurised Water Reactor (PWR)
Operational (1.196 GW Capacity)

Sizewell A
Magnox AGR (0.42 GW)
In Decommission

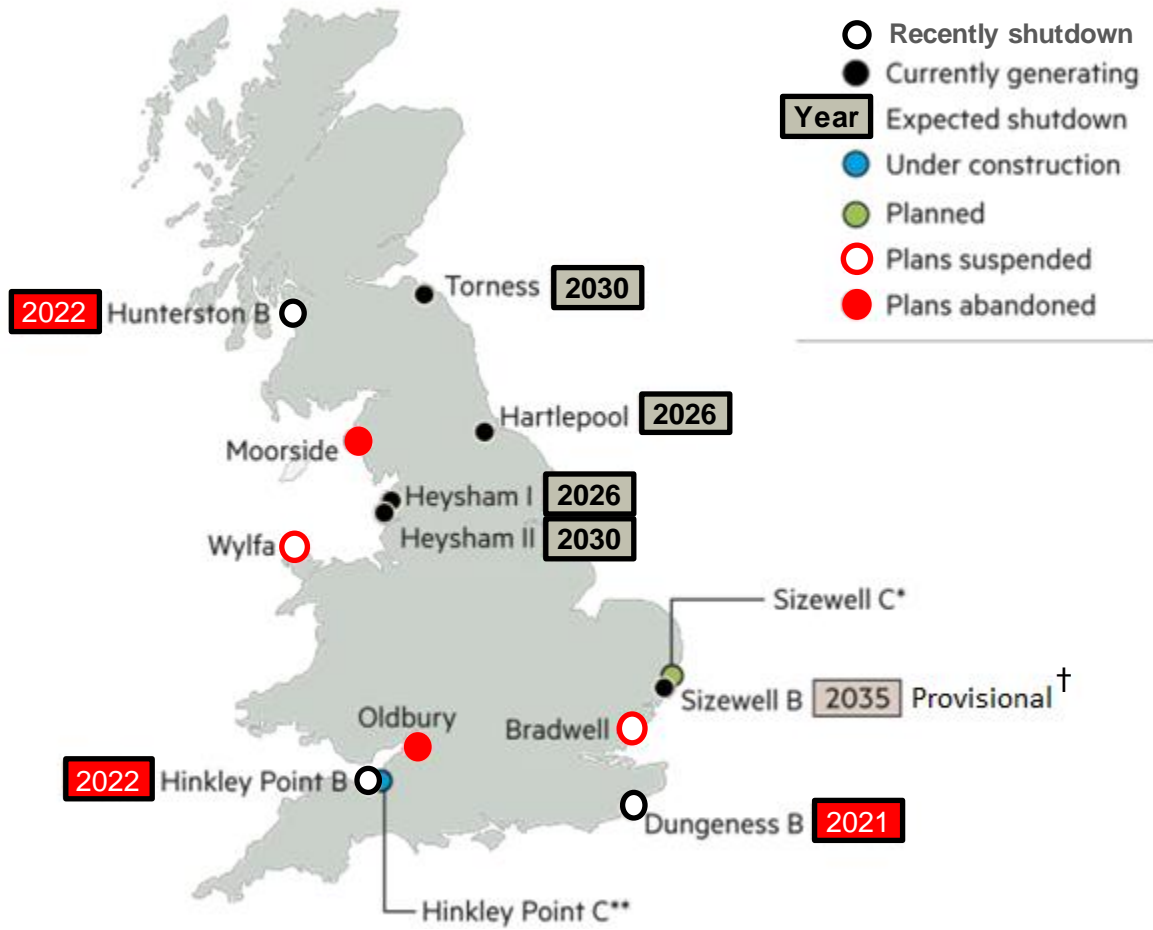


All the objects shown **green** on the picture will copy the UK approved design of HPC



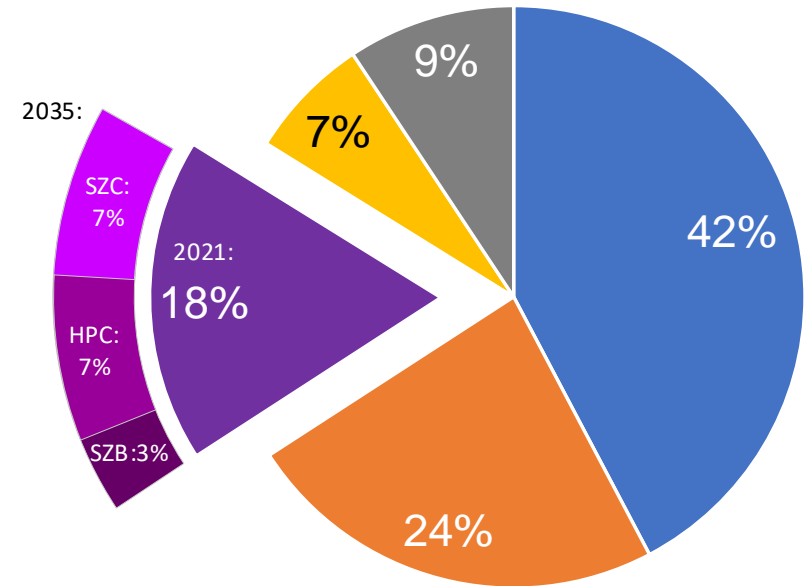
Why SZC? - UK Nuclear Power Generating Infrastructure

Status of UK's existing and proposed nuclear power stations



*Planning application approved **Planned in-service date: 2028 † Likely to be extended to 2055

Average UK Energy Sources Mix



Based on 2021 Data Pre-Energy Crisis

- Fossil Fuels
- Low Carbon Renewable Energy
- Low Carbon Nuclear Energy
- Other Energy Sources
- Imports via Interconnectors

UK Nuclear Energy Production Post 2035:

- Sizewell B: 1.198 GW - 3% of UK Output
- Hinkley Point C: 3.26 GW - 7% of UK Output
- Sizewell C: 3.26 GW - 7% of UK Output

Sizewell C will have lower lifecycle carbon emissions than wind and solar. All three technologies will be essential in helping Britain achieve net zero.

Visit sizewellc.co.uk for more info

Carbon produced by different energy sources per kilowatt-hour of electricity generated, CO₂ eq



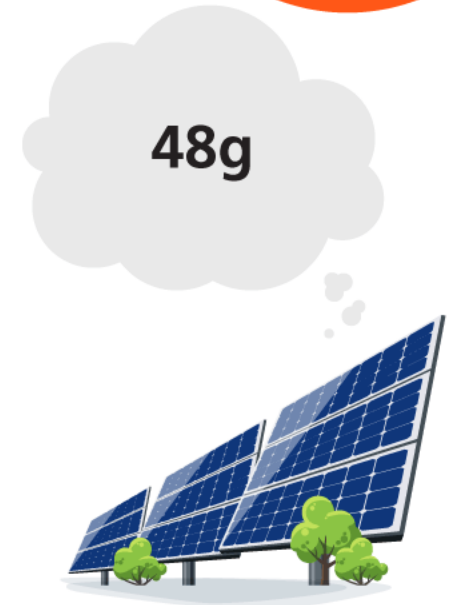
Gas



Sizewell C nuclear power station



Offshore wind



Solar

The carbon avoided by generating electricity from Sizewell C rather than from a gas-fuelled power station means that it will 'offset' its construction emissions within a few months of operation.

Source: Sizewell C emissions based on 2021 LCA estimate. Gas, offshore wind and solar emissions based on 2014 IPCC median estimates.

SIZEWELL C IS A PROPOSED NEW NUCLEAR POWER STATION THAT WILL BE BUILT ON THE SUFFOLK COAST



IT WILL
SUPPLY
POWER TO **6** MILLION HOMES
AND GENERATE
ELECTRICITY FOR 60 YEARS

SIZEWELL C WILL PROVIDE LOCAL JOBS, TRAINING AND EDUCATION BENEFITS

SIZEWELL C
WILL SAVE
9 MILLION
TONNES OF CO₂
EMISSIONS EVERY
YEAR OF OPERATION



SIZEWELL C
WILL TAKE
9-12 YEARS TO BUILD

SUPPORT
233,000*
UK
JOBS



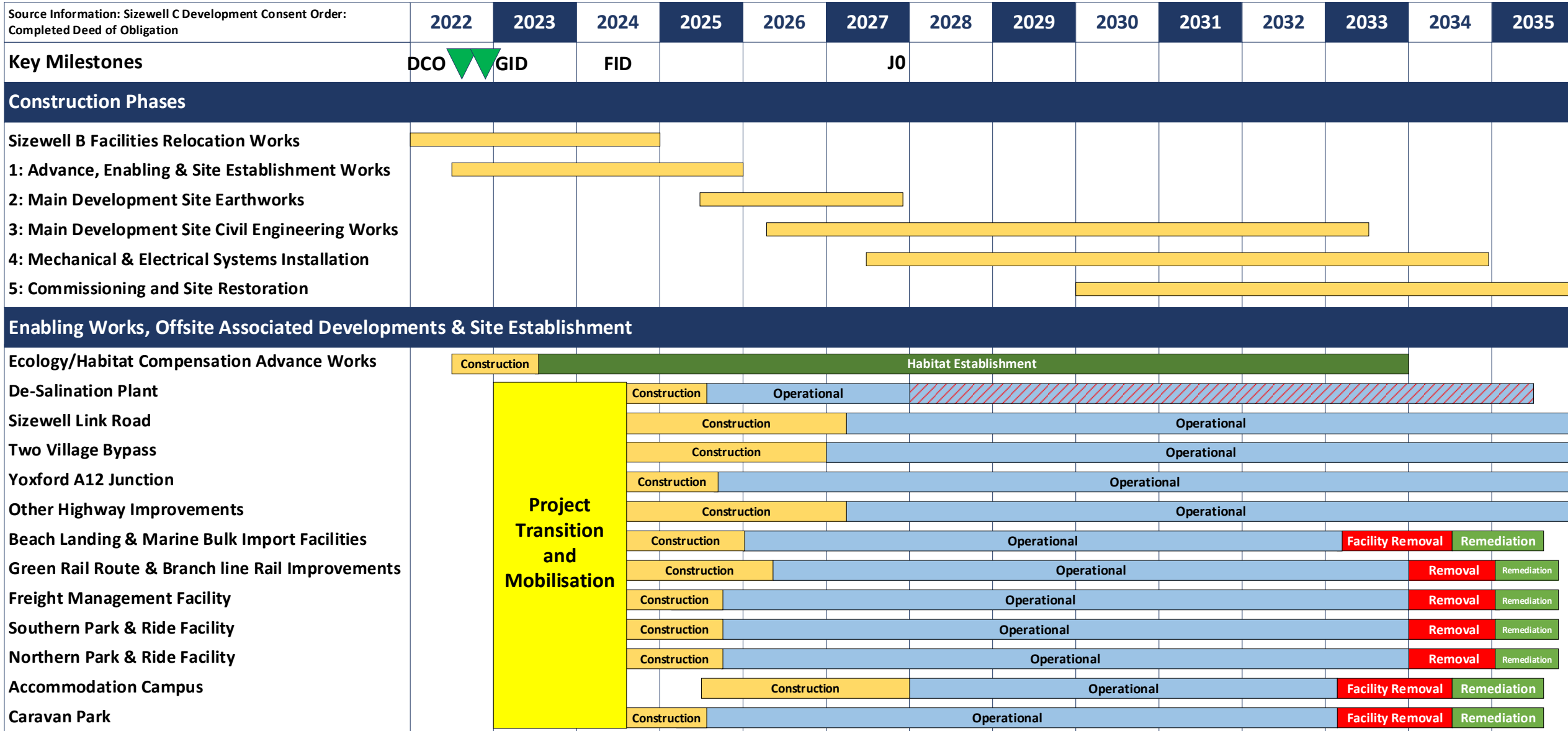
- **2022 – The year of milestones**
- Sizewell C Development Consent Order – 20th July 2022
- Prime Minister visit to Sizewell C – 1st September 2022
- Start of preparatory/Early works – 8th September 2022
- Government investment decision announced - 29th November 2022
- Judicial Review launched
- Final investment decision – In this parliament



• 2023 – The year of transition

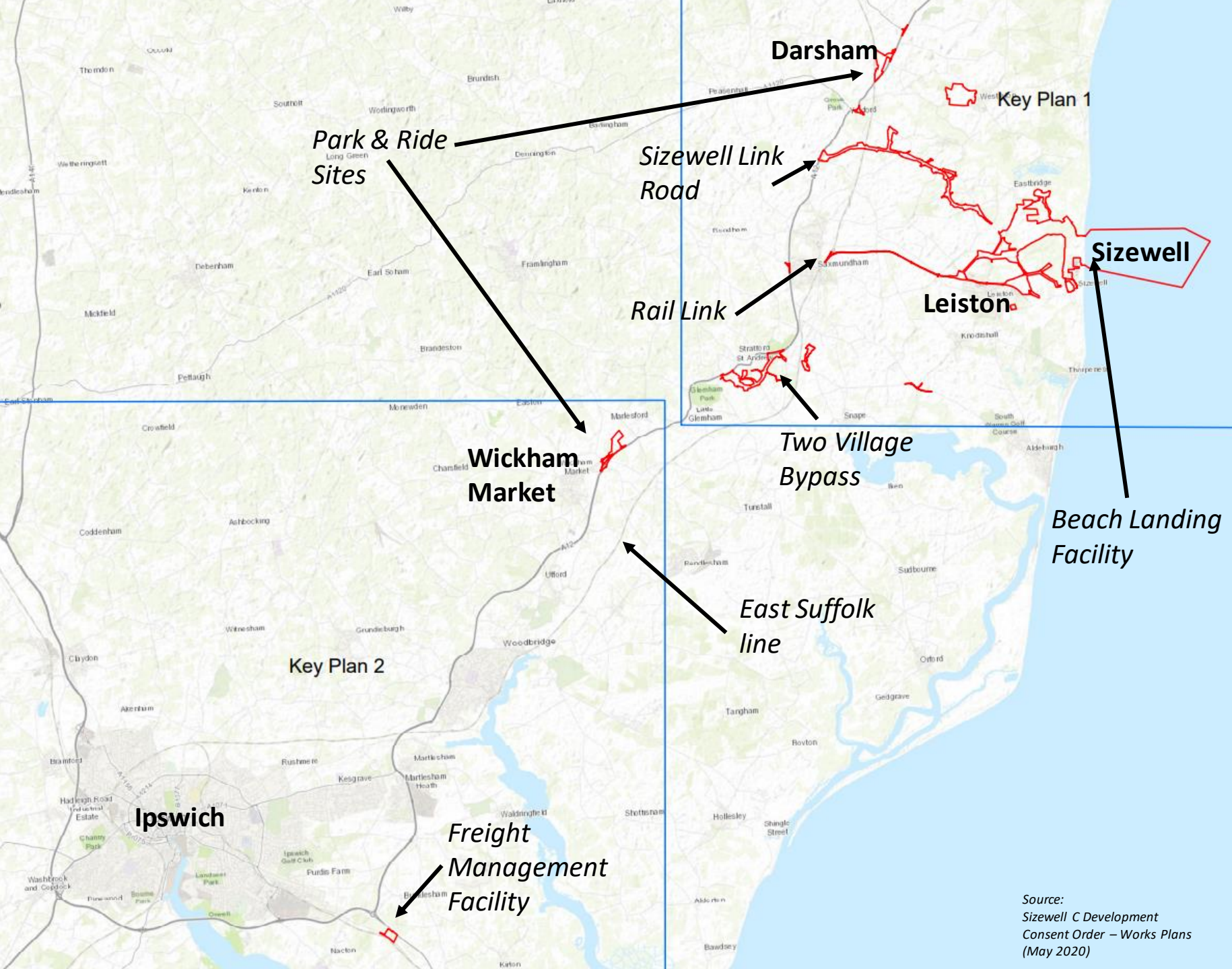
- Sizewell C setting up 'Delivery org'
- Supply Chain strategy, Min' standards, Tender event schedule all under revision
- Ongoing work to secure funding
- Early works with existing Tier 1's underway
- Judicial review satisfied
- Focus on establishing ESG principles across project
- Meet the Buyer events on horizon
- Increased input and sharing of experience from HPC
- Chance to all 'Get Ready'

Indicative SZC Construction Timeline



Transport Strategy

- Sustainable transport strategy
- 60% deliveries by sea and rail
- Demand management on roads: Freight Management Facility, Park and Ride sites
- Bypasses on A12 (Farnham and Stratford St Andrew and Sizewell Link Road)
- Accommodation Campus
- Approved routes to and from site



Source:
Sizewell C Development
Consent Order – Works Plans
(May 2020)



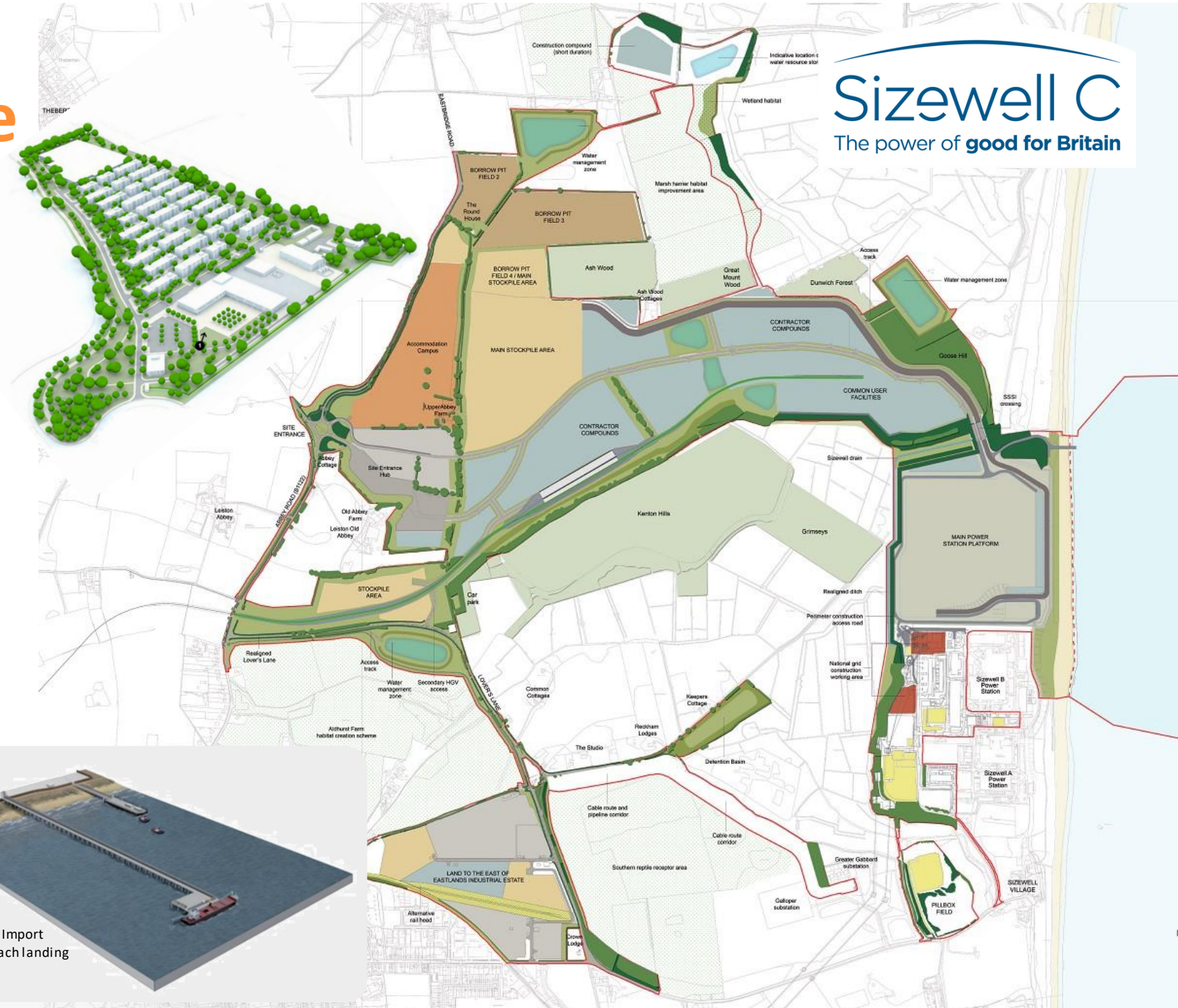


- The South Park and Ride (AD0120) on-site development and associated adoptable highways. The facility will be constructed on a 26.4 ha field at Wickham Market and entails:
 - 1,250 car parking spaces
 - 10 spaces for minibuses/vans/buses.
 - 80 motorcycle parking spaces.
 - Cycle shelters for 20 bicycles.
 - Bus terminus areas, including shelters.
 - Security fencing, entry/exit barriers, Lighting and CCTV
 - Amenity and welfare buildings, with toilets and staff room.

How will SZC be constructed

The ship in a bottle

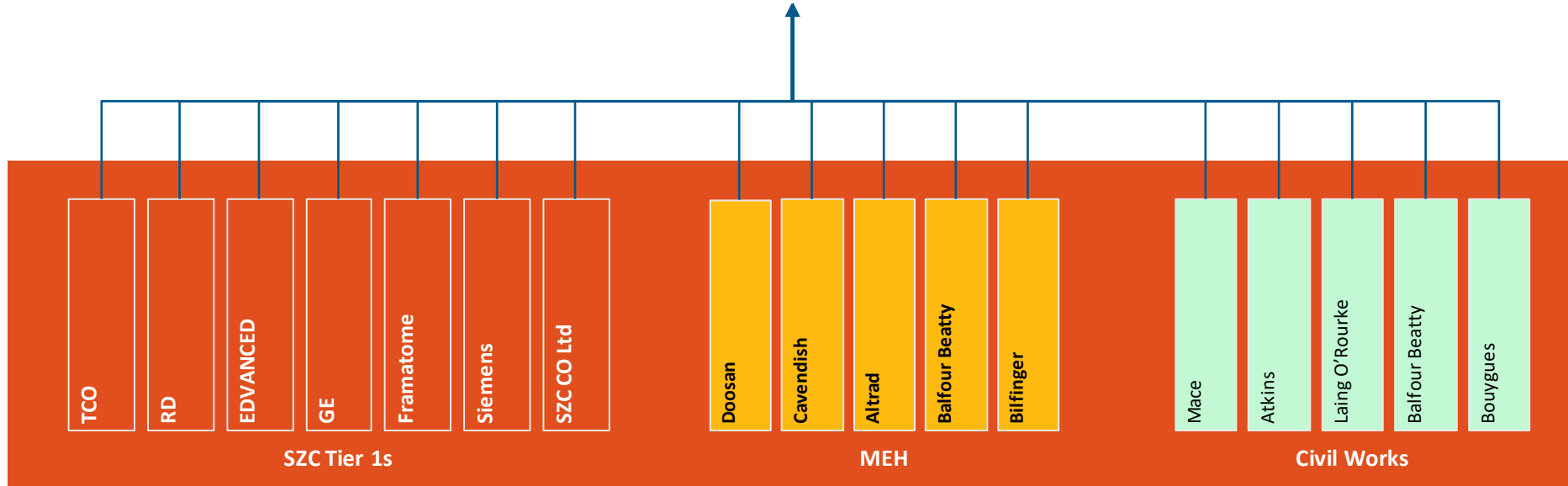
- Sizewell C will take 10 – 12 years to build.
- Land to the north and west of the platform will be used during construction.
- Associated developments will deliver freight & people to the site sustainably - 60% via Rail and Sea
- 2410 bed campus with additional caravan parks
- 2 P&R sites with freight management and road/rail improvements



Sizewell C
The power of good for Britain

The Supply Chain

Client – Sizewell C Company



Supply Chain
(Tier 2+ suppliers)

Supply Chain
(Tier 3+ suppliers)



SizewellC
Consortium





Sizewell C has vast potential:

The Energy Hub

- Produce **Low Carbon Hydrogen**, using heat to make electrolysis more efficient
- Capture significant amounts of carbon dioxide via **Direct Air Capture**
- Enable production of **Clean Fuels** for shipping and aviation
- Provide clean heat for industrial processes and for **District Heating**
- Cool **Data Centres** using nuclear energy
- Work with **Freeports** to provide clean heat and power
- Power **Desalination Facilities** to meet water requirements



- Sizewell C will deliver a net gain in local biodiversity of 19%.
- Sizewell has won awards for the biodiversity management of the estate.
- An independent environmental body will be set up to support rewilding and promote further biodiversity.
- The DoO package includes up to £100m for the environment, £78m of which is dedicated to enhancement through a new Environmental Body.
- Aldhurst Farm is 67 hectares of new habitat created by Sizewell C, benefiting a variety of wildlife as well as rare plants.

Our Key Themes



Our Key Themes

Local

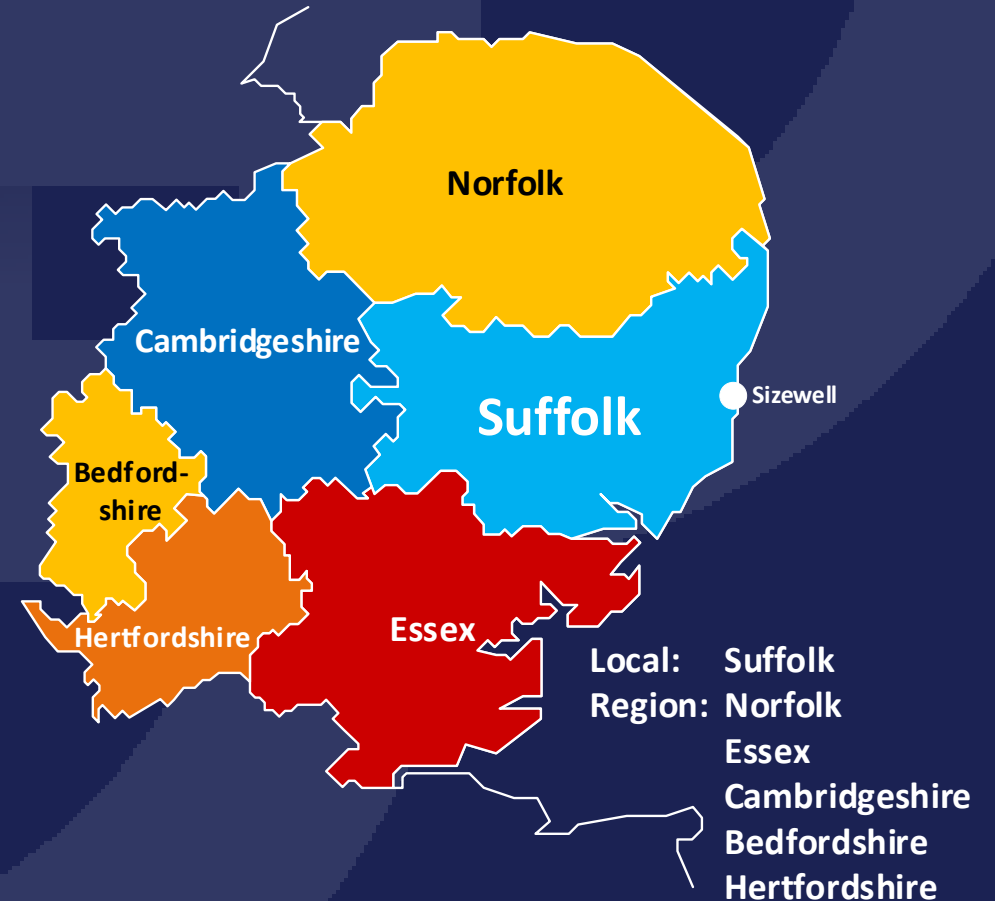
- Local jobs - Employing people from this region
- Local skills - Expanding & training of new and existing workforce
- Local opportunities – Projects on and off site across the region
- Joint ventures – Fostering Collaboration over competition

Legacy

- Positive and enduring impact for the area & region
- Building a business community fit for future growth
- Preparing Business for large infrastructure projects
- Increasing Diversity and Inclusivity in the workplace
- Improving health, wellbeing and community cohesion

Environment

- Contributing to the UK's 2050 net Zero ambitions
- Reducing environmental impact and promoting increases in biodiversity

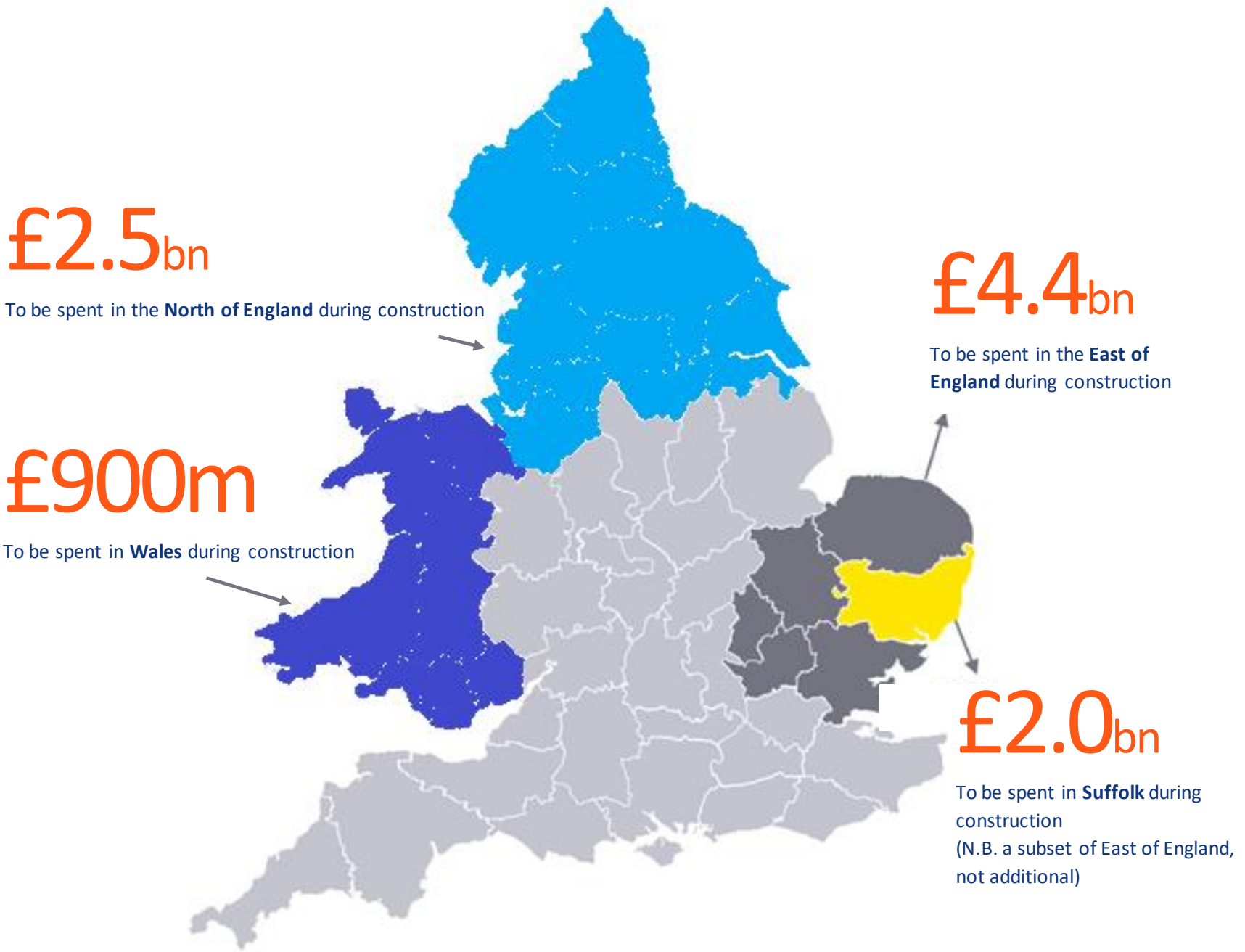


£2.5bn

To be spent in the **North of England** during construction

£900m

To be spent in **Wales** during construction



£4.4bn

To be spent in the **East of England** during construction

£2.0bn

To be spent in **Suffolk** during construction
(N.B. a subset of East of England, not additional)

Sizewell C

• The National Commitment

- Core commitments aligned to UK levelling up
- Future Nuclear supply chain focusing on GB Nuclear
- Partnerships and sharing of expertise
- Funnel for all regional engagement activities in the UK
- Huge % of spend in core regions



The Civil Works programme

Earthworks
£450m
(BB, BY & LOR)

Advanced Works
£200m
(MACE / BB)

Site Establishment
£600m
(MACE / BB)

Engineering & Design
£360m
(ATKINS)

Enabling Works
£670m
(BB, BY & LOR)

Site Ops & Logistics
£1.3bn
(Alliance)

Total Civil Works
Estimated Value
£8-10bn

Associated Developments
£490m
(MACE / BB)

Marine & Tunnelling
£1.2bn
(BB & BY)

Ancillary Works
£240m
(TBC)

Main Civils Works (CI/BOP)
£1.8bn
(BY & LOR)

Main Civils Works (NI)
£2bn
(BY & LOR)

Social Value

What does this mean?

The local supply chain forms a key part of the projects strategic aims and the UK Governments wider social value alignment



Social Value Requirements – Themes

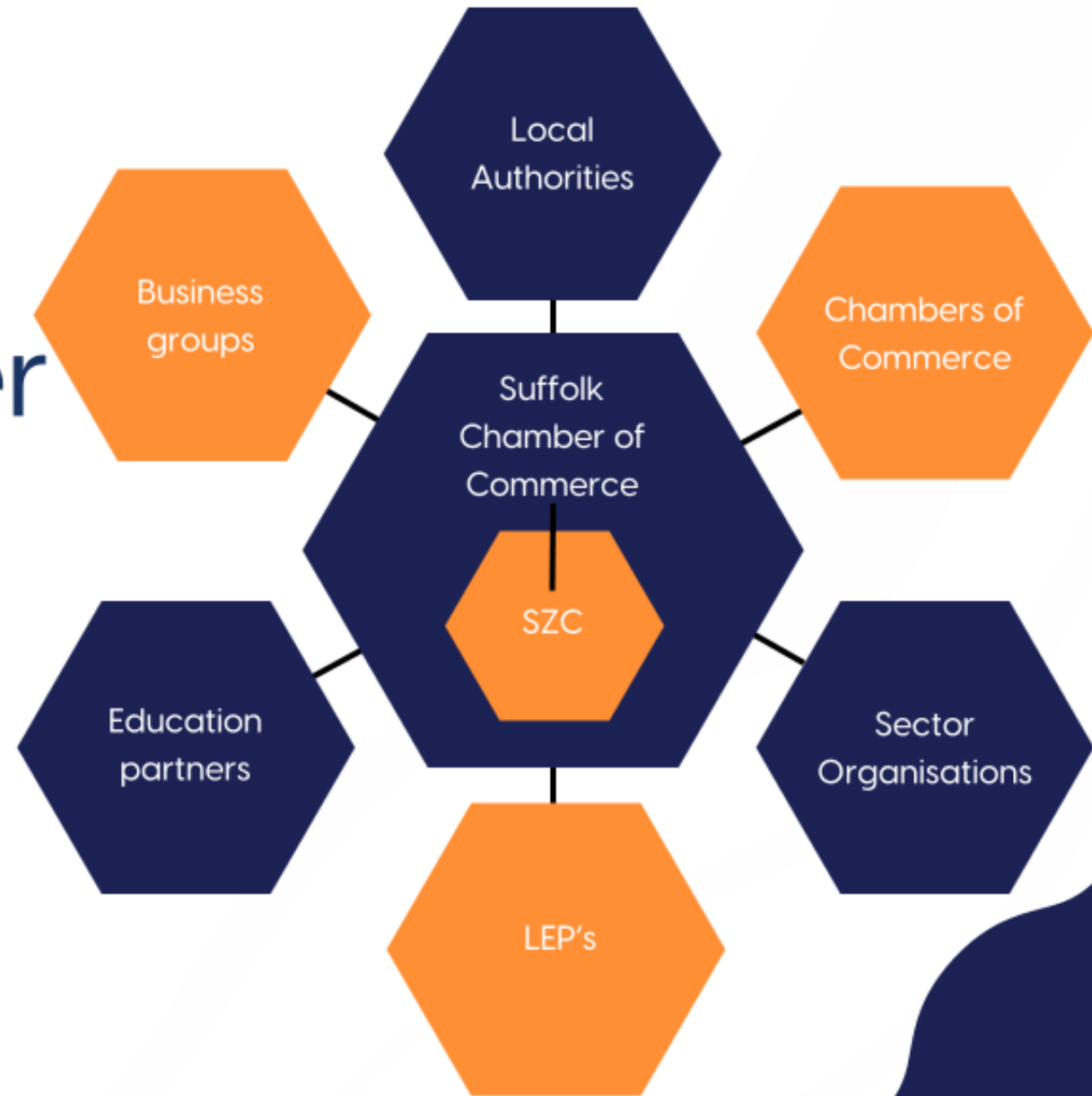
The requirements sit under 5 distinct themes

- **Increasing UK content**
 - Promote proximity of supply chain and the use of SME's
 - Advertise all competitive tender opportunities to the market
 - Support the UK steel industry
- **Investing in education, employment and skills**
 - Improving people's skills and employability
 - Employ local people
 - Facilitate access to employment opportunities
 - Provide opportunities for progression
- **Reducing the environmental impact of construction**
 - Demonstrate progress towards achieving Net Zero
 - Deliver additional environmental benefits
 - Contribute towards SZC's CEEQUAL aspirations
- **Optimising opportunities for local communities**
 - Reduce the carbon footprint of workforce journeys
 - Reducing crime
 - Creating a healthier community
 - Vulnerable people are helped to live independently
 - Work to improve the functioning and growth of local communities
 - Support the creation of green spaces
- **Tackling workforce inequality**
 - Equal opportunity employment initiatives
 - Promote gender balance
 - Improve staff wellbeing
 - Support economically inactive adults into work
 - Creating employment opportunities for rehabilitating ex-offenders
 - Creating employment opportunities for military ex-armed forces

The Supply Chain

Feeding in to Suffolk Chamber of Commerce

All sectors can be represented on this project. The vital action is to increase awareness and direct support through the correct channels





Methods of Support

How will we help you

- Intro's & Recommendations to Alliance and Tier 1's
- Nuclear Safety culture & practices
- Health & Safety and Compliance
- Contracting standards & requirements
- Funding and training
- Collaboration & JV's
- Innovation support
- Compete For & Chain Portal
- Social Value & ESG

Supply



SZC Minimum Standards for Suppliers



Sizewell C actively seeks all suppliers to meet its minimum standards for all procurement opportunities:

1. **Strong Nuclear Safety Culture** - Understand the importance of and demonstrate the principles of a strong nuclear safety culture.
2. **Suitable Financial Standing** - Have suitable financial standing to undertake work packages in accordance with contract requirements.
3. **Accurate Technical Capability** - Possess technical capability and capacity to undertake work packages in accordance with contract requirements.
4. **Zero Harm Health & Safety Compliance** - Where providing works, products or services that carry a Health and Safety risk, provide evidence of a health and safety management system that meets ISO 45001 or equivalent.
5. **Environmental Compliance** - Where providing works, products and services that carry an environmental risk, provide evidence of an environmental management system that meets ISO 14001 or equivalent.
6. **Quality Management Compliance** - Where providing works, products or services that carry a quality risk, provide evidence of a quality management system that meets ISO9001 or equivalent.
7. **Protecting against NCFSI** - Demonstrate sufficient and suitable systems to protect against incorporation of Non-confirming, Counterfeit, Fraudulent and Suspect Items (NCFSI) into the goods and services supplied to SZC Genco.
8. **Sub-Contactor Oversight** - Demonstrate appropriate systems to assess and maintain the adequacy of the sub-supply chain, including contractual rights to oversee and approve sub-suppliers to control compliance with safety, quality, reporting and commercial requirements.
9. **Exhibit Social & Environmental Commitments** - Demonstrate that the organisation has the capacity and capability to deliver our social and environmental commitments through the work package.
10. **On-time Payments** - Operate supply chain payment arrangements that provide regular payments and align with industry standard payment periods.
11. **Security of Information** - Demonstrate the existence of appropriate systems to comply with contractual and legal obligations which may be placed on them to maintain security of information (cyber), personnel and the site.
12. **Ethical Behaviour** - Conduct themselves in an ethical and sustainable manner.

Supply Chain Portal

- Please visit www.sizewellcsupplychain.co.uk regularly for updates on the project.
- There you will also find useful background information about the nuclear sector, training, funding and business support.
- Registration is free and allows you to highlight the capabilities of your company to help us position you for relevant events and opportunities as they become available.
- Please make sure your registration is complete with up to date, so we can contact you for opportunities and our supplier matching activities as they arise.....
- Consistent engagement with the portal and our team is critical



The screenshot shows the homepage of the Sizewell C Supply Chain Portal. The header features the logo for Sizewell C Supply Chain, which includes a stylized 'S' and 'C' icon and the tagline 'CONNECTING BUSINESS TO OPPORTUNITY'. To the right of the logo is a search bar with the placeholder text 'search the directory...' and a magnifying glass icon. Further right is a dropdown menu labeled 'Select a category...' with a downward arrow. In the top right corner, there is a 'LOGOUT' button with a user icon. Below the header is a navigation menu with links for 'HOME', 'ABOUT', 'WORK PACKAGES', 'NEWS', 'SUPPORT', 'EVENTS', 'FAQs', and 'CONTACT'. A prominent orange button labeled 'UPDATE ACCOUNT' is positioned on the right side of the navigation bar. The main content area features a large heading: 'Connecting Business to Opportunity' followed by 'Sizewell C Supply Chain'. Below this, a paragraph states: 'Plans to build Sizewell C received approval for their Development consent order in July 2022, and received Government investment decision in November 2022.' Another paragraph mentions: 'With work planned to start in 2023, the Suffolk Chamber of Commerce and Sizewell C are working together to engage with the local and regional businesses from across East Anglia to ensure that long term local benefits are felt from this nationally significant infrastructure project'. At the bottom, a partial sentence reads: 'The Sizewell C Supply Chain Engagement team are here to support and guide local businesses,'. On the right side of the page, there is a large image of a woman wearing a white hard hat and an orange safety vest, looking towards the right. Below this image is a smaller image showing a construction site with cranes and scaffolding.

Compete For

- Sizewell C opportunities will be advertised on CompeteFor
- To have access to tenders you must register on CompeteFor.
- Once registered, complete & publish your business profile to allow you to respond to opportunities.
- When logged in to CompeteFor, complete your email alert profile to keep up to date with opportunities that are relevant.
- Please find our helpful videos for setting up your business profile & email alerts - <https://www.competefor.com/video-guides/>

The screenshot shows the CompeteFor website interface. At the top, it identifies itself as the 'Official partner of CompeteFor' and 'The UK supply chain portal', with 'Login' and 'Register' buttons. The main banner features the 'Sizewell C' logo with the tagline 'The power of good for Britain' over a sunset landscape. A navigation bar includes 'Opportunities', 'Awardee Information', 'Project News', 'Events', and 'About'. On the right, a 'Latest 10 opportunities' section lists 'Project Delivery Organisation Subs Bench' with a deadline of 31/10/22 and a 'View all opportunities' button. The main content area contains three informational blocks: 1) A paragraph describing Sizewell C as a landmark project for two EPR nuclear reactors on the East Coast of Suffolk, England, highlighting its competitive cost and 7% energy generation capacity. 2) A graphic stating 'SIZEWELL C IS A PROPOSED NEW NUCLEAR POWER STATION THAT WILL BE BUILT ON THE SUFFOLK COAST', which 'IT WILL SUPPLY POWER TO 6 MILLION HOMES AND GENERATE ELECTRICITY FOR 60 YEARS'. 3) A graphic stating 'SIZEWELL C WILL PROVIDE LOCAL JOBS, TRAINING AND EDUCATION BENEFITS', 'SIZEWELL C WILL SAVE 9 MILLION TONNES OF CO2 EMISSIONS EVERY YEAR OF OPERATION', and 'SIZEWELL C WILL TAKE 9-12 YEARS TO BUILD SUPPORT 900 PERMANENT JOBS'. A final line at the bottom states 'Sizewell C has a clear advantage: it is a follow-on'.

Keeping up to date

Please visit www.sizewellcsupplychain.co.uk regularly for updates on the project. There you will also find useful background information about the nuclear sector, training, funding and business support.

If not signed up, registration is free and allows you to highlight the capabilities of your company to help us position you for relevant events and opportunities as they become available. Please make sure your registration is complete with up to date, so we can contact you for events or opportunities as they arise.

For Tender notifications please visit www.competefor.com/sizewellc and to submit application for tenders please register on: <https://www.competefor.com/business/signup.html>. For “how-to” guides: <https://www.competefor.com/video-guides/>

The Sizewell C Development Consent Order (DCO) Document Portal contains extensive project information on the details and plans submitted to the Planning Inspectorate, and these can be found at: www.sizewellcdco.co.uk/view-documents/

For more information please email the team : ashley@suffolkchamber.co.uk





Plan your next steps

Consider today

- The project is moving into 'Delivery Mode'
- The commitment has been made
- Now it is time for you to start to get ready
- Front foot and be agile
- This is real... Start to have those conversations
- We still have time, but it will start soon
- The support is there, what support do you need?

Building the Sizewell C Supply Chain

Q&A

www.sizewellcsupplychain.co.uk

