
Herts IQ Opportunity

Herts Chamber

11th February 2021

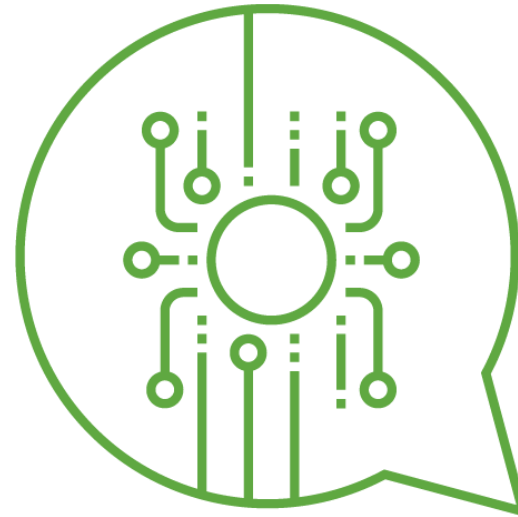
Cherie Norris

Herts IQ Programme Manager



Hertfordshire Innovation Quarter (Herts IQ)

- Government approved Enterprise Zone
- 25 year status - 2017 – 2042
- 8 sites, 3m sqft new commercial development
- 8,000 new jobs targets
- Partnership of 7 leading the programme
- Sector clustering:
 - Smart construction
 - Agri-tech/science
 - Environmental technologies
- Investment in infrastructure and skills



Hemel Garden Communities

- Government approved Garden Town
- Herts IQ is the commercial heart
- 11,000 new homes
- Transformation of Hemel Hempstead
- Development principles include:
 - Exemplary design
 - Sustainable / NZC build and renewable energy
 - Transformative mobility
 - Connective green infrastructure
 - Innovative approaches to delivery
 - Vibrant communities
 - Digitally connected





TOWARDS
LONDON LUTON
AIRPORT

HARPENDEN

ROTHAMSTEAD
RESEARCH

SPENCERS
PARK

HEMEL
HEMPSTEAD

CROWN
ESTATE

ST ALBANS

MAYLANDS
AVENUE

PROLOGIS
PARK

MAYLANDS
GATEWAY

M1

M25

J21

WATFORD

BUILDING RESEARCH
ESTABLISHMENT



Maylands Avenue

Prologis Park

Maylands Gateway

Crown Estate

Spencers Park

Towards Rothamsted Research

Towards BRE



Sector clustering

- Collaboration
- Supporting growth of Herts businesses & attracting new companies to locate here
- Expand products / services / market access / supply chain
- Connecting academic thinking, research, and commercial potential
- UH, BRE, Rothamsted – sector leading R&D and market innovation
- UK growth sectors

Creating places for the future

- Development of the Herts IQ sites (10 year programme) / HGC sites (25 year programme)
- Space to grow for Herts businesses cross sectors
- Herts IQ demand study – future workforce patterns
- Formal supply chain events / engagement mechanisms will be established
- ‘Made In Hemel’ concept in HGC spatial vision
- Spaces and places to pioneer and showcase new technologies, concepts, in the drive towards NZC and a more sustainable future

Smart construction

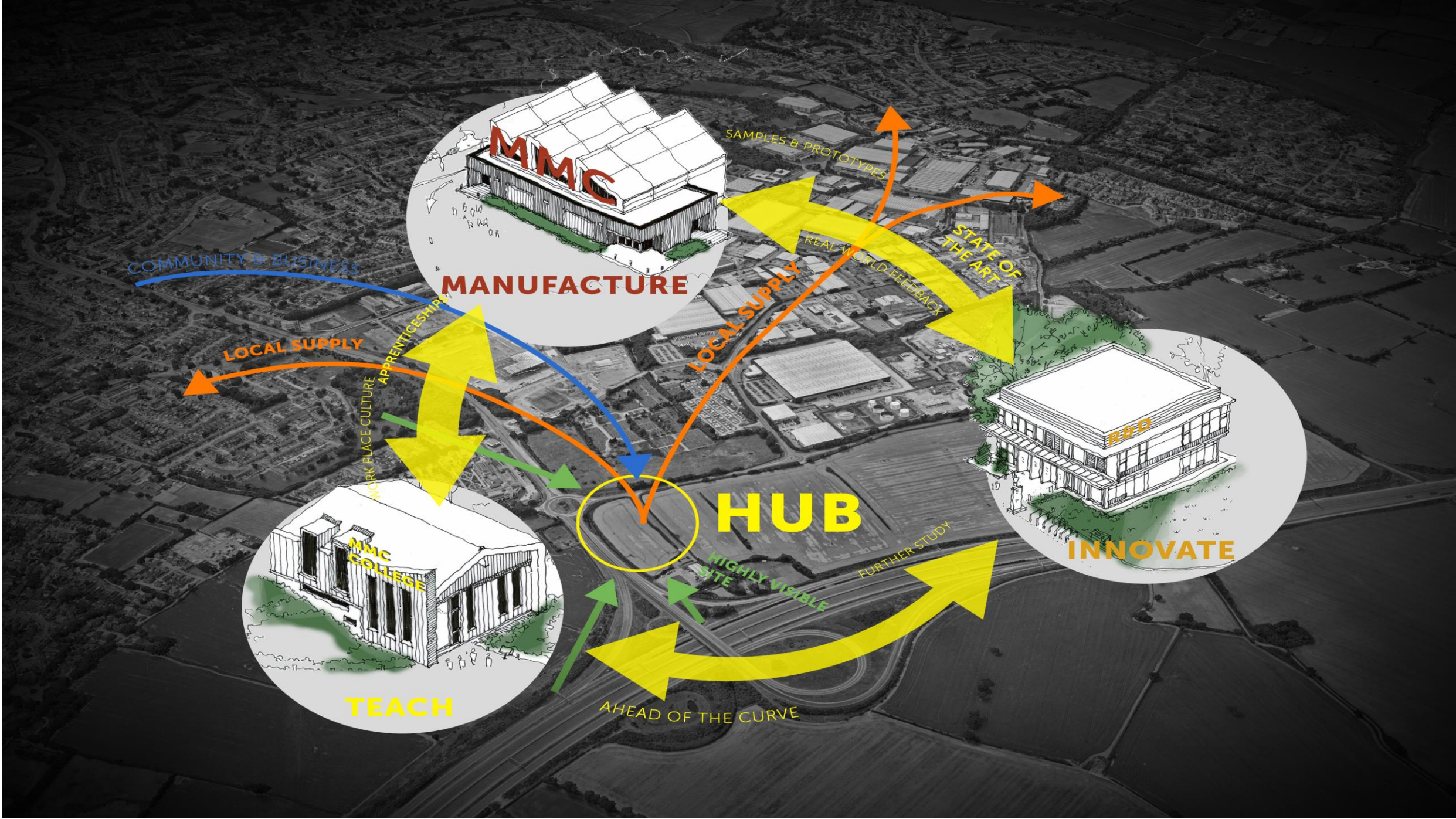
- Strong sector in Herts
- Major UK contractor HQ's
- Diverse existing supply chain
- Significant skilled workforce
- BRE
 - Global leader, local partner
 - Leading UK sector transformation
- Showcase development
 - Two Garden Town developments
- NZC - retrofit market as well as new build



OSM/MMC

- Herts leaders are laying the foundations
- Accelerating housing building and sustainability outcomes
- Factory investment
- Skills, capacity, supply chains
- BRE & Construction Innovation Hub
- Delivery of housing across Herts (incl HGC & GGT)





MANUFACTURE

HUB

INNOVATE

TEACH

COMMUNITY & BUSINESS

LOCAL SUPPLY

APPRENTICESHIP

LOCAL SUPPLY

REAL WORLD FEEDBACK

STATE OF THE ART

HIGHLY VISIBLE SITE

FURTHER STUDY

AHEAD OF THE CURVE

SAMPLES & PROTOTYPES

MMC COLLEGE

MMC

R&D

Opportunity Hertfordshire

- Interactive virtual event themed around net zero challenge and Hertfordshire's response relevant to construction industry audience
- In partnership with Herts Chamber, showcasing Hertfordshire as the place for forward thinking businesses to invest
- Speakers included Gillian Charlesworth CEO BRE and Minister for Business and Industry Nadhim Zahawi MP
- Panel including Stewart Milne Timber Systems, EasyBuild, Willmott Dixon, and Morgan Sindall.



**Opportunity Hertfordshire**
Building a sustainable future

Nadhim Zahawi
Minister of Business & Industry
on Government's strategy for
clean growth

Virtual Conference | 5th November

Digital campaign activity

Opportunity Hertfordshire
Building a sustainable future

As the race to Net Zero accelerates with the construction industry facing critical challenges, join us on November 5th at 2.00-3.30pm to hear how Hertfordshire's leading organisations are bringing together new investment, commercial space and skills provision as a unique opportunity for smart construction.

Virtual Conference
5th November
2pm - 3.30pm

We have developed an interactive, virtual conference, where you'll still be able to put your questions directly to our expert panel including:

- Gillian Charlesworth**
CEO, BRE Group
- Richard Whitehead**
Chair of Herts IQ & Managing Director, Building & Places, UK & Ireland AECOM
- David Williams**
Leader of Hertfordshire County Council

Brought to you by Opportunity Hertfordshire, bre, IQ, Hertfordshire Chamber of Commerce, Hertfordshire Local Enterprise Partnership

E-DM to 500 contacts

Hertfordshire IQ @HertsIQ · Nov 3, 2020

Join us for a lively discussion on Thurs 5 Nov 2-3.30pm as we explore how the #construction industry in Hertfordshire is accelerating the race to #netzero

@morgansindall @WillmottDixon @BRE_Group @HertsChamber

Book your free place ow.ly/daVj50CabaF

- ▶ **David Rowsell**, Area Director - Northern Home Counties, Morgan Sindall
- ▶ **David Williams**, Leader, Hertfordshire County Council
- ▶ **Gillian Charlesworth**, CEO, BRE Group
- ▶ **Ian Charie**, Programme Director, Hermet Garden Communities
- ▶ **Richard Davidson**, Director, Willmott Dixon
- ▶ **Richard Whitehead**, Chair Herts IQ & MD Building & places UK & Ireland, AECOM

Social media activity

Hertfordshire IQ @HertsIQ · Oct 30, 2020

We're delighted to have @CarolMassay CEO @EasybuildUKCON join one of our interactive panels at Opportunity Hertfordshire: Building a Sustainable Future, where we'll discuss the challenges and opportunities of #NetZero.

Register for your free place: ow.ly/Oq5Y50C6Ylc

2 replies, 4 likes

Hertfordshire IQ @HertsIQ · Nov 4, 2020

There's still time to join us tomorrow at our virtual Opportunity Hertfordshire event in partnership with @BRE_Group and @HertsChamber showcasing the region's strengths in supporting innovation and growth across the #construction industry.

Book now: ow.ly/Mfsl50C6VXY

6 replies, 5 likes

Agri-tech/science

- Rothamsted Research – 150 years of global leaders in crop science
- International projects focused on sustainable food production and climate change
- New collaboration space - The Russell Building
- Collaboration and research potential
- University of Hertfordshire agri-tech and digital tech capabilities
- Start-up / business support



Sustainability & NZC

- Environmental technology companies
- Circular economy
- Digital, data, AI, robotics
- New environmental innovations
- Array of interconnected themes and opportunities
- Cross sector collaboration and market extension potential
- HGC & HIQ developments striving for outstanding 'green creds'
- Sustainable business practices



Place-making

- Showcase developments
- Aspiration for NZC development
- Outstanding design
- Vibrant communities
- Formal supply chain connecting to come
- Herts based businesses supporting the place-making and development, as well as the sector innovation and growth





**Hertfordshire
Innovation
Quarter**