



Strategic Vision for Hertfordshire and the work of the Growth Board

Patsy Dell
27 July

Our purpose: a plan for sustainable growth in Hertfordshire

Hertfordshire Growth Board is the way that political, civic and business leadership is working together in Hertfordshire to manage future growth and support economic recovery.

Our ambition

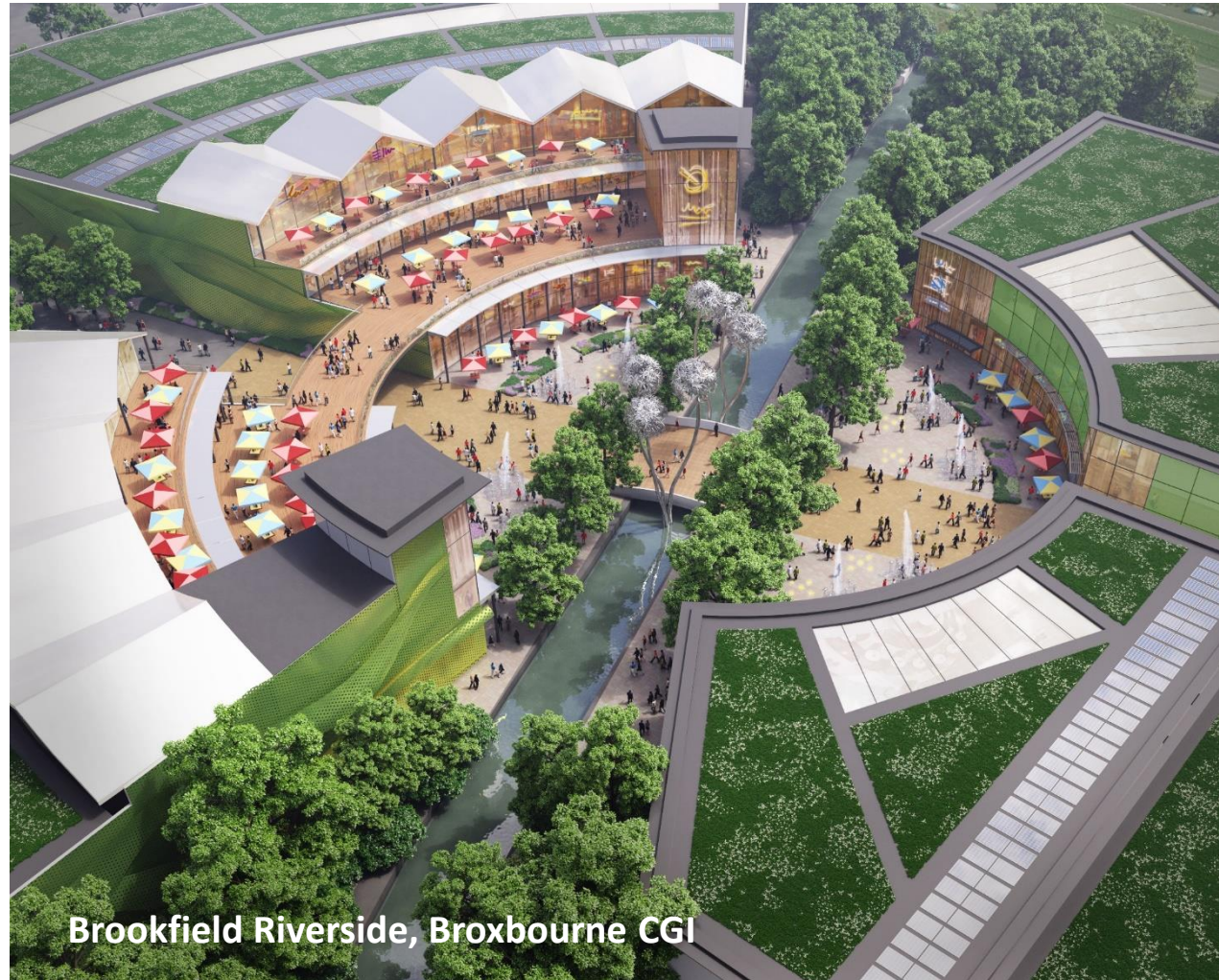
To continually improve life for everyone in Hertfordshire

Our vision

Happy, healthy, diverse communities who feel they belong and get more out of life.

A place that grows without compromising the character that makes it special.

An economy and infrastructure that puts Hertfordshire people first.



Brookfield Riverside, Broxbourne CGI

What has the Growth Board been doing?

Since the Growth Board was formed in late 2018, collaboration and joint working in Hertfordshire has enabled us to progress on our key challenges and priorities including:



Homes &
Communities



Infrastructure



Environment



Economy & Jobs



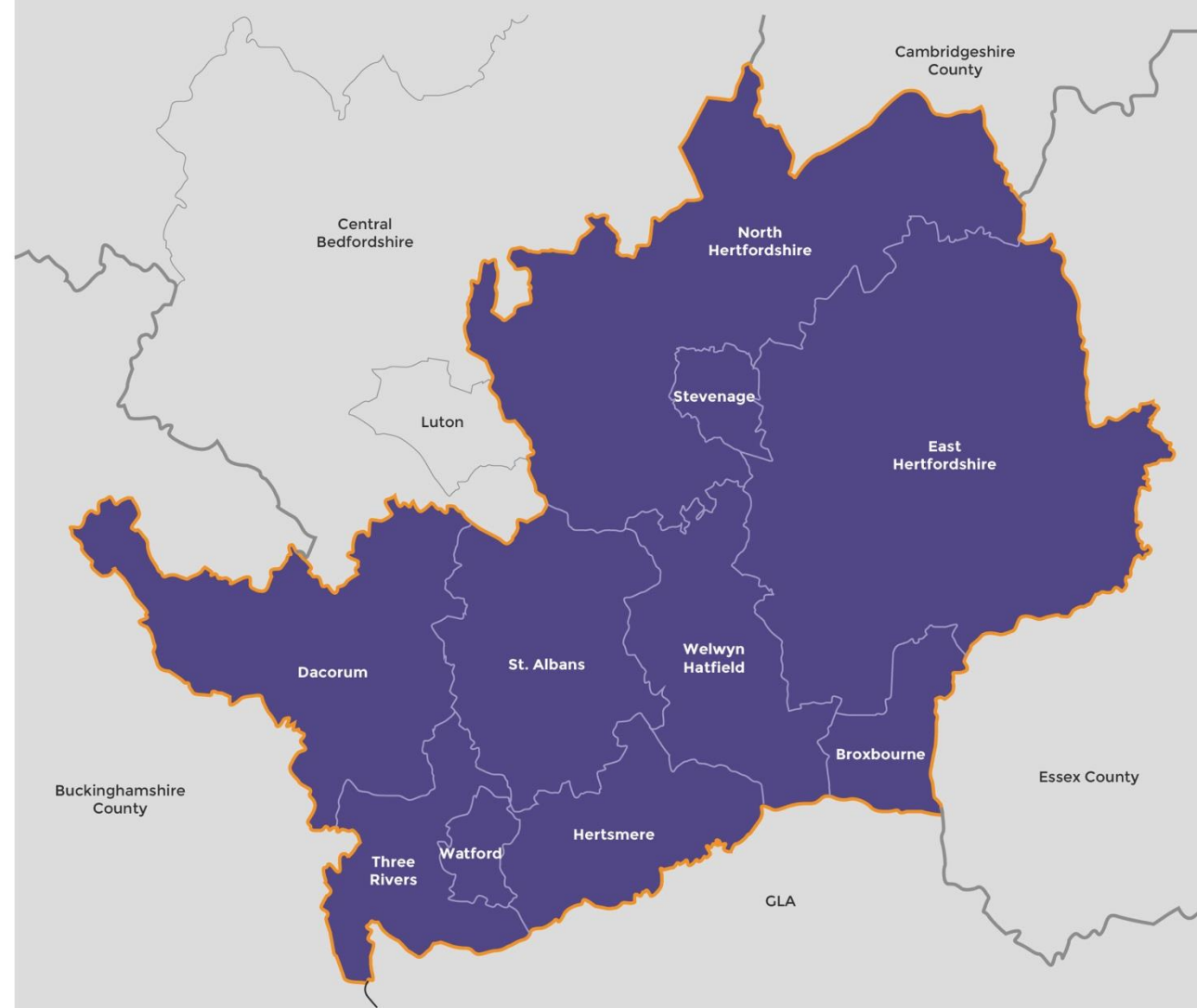
Investment



Positioning with
Government

Our progress over 2020/21

- ✓ Signing of the collaborative working MOU by all HGB Partners
- ✓ Growth Board joint work programme agreed
- ✓ Establishment of the Growth Corridors programme architecture, programme management and joint project teams
- ✓ Creation of the Growth Board dedicated team
- ✓ Developed an Economic Recovery and Growth Prospectus and positive feedback from MHCLG/HM Government on our work to develop this
- ✓ Developed a Hertfordshire place narrative, with a compelling story, and strong visual identity
- ✓ Established the Growth Board as a statutory joint committee with a joint integrated governance framework



Growth Board Work Programme Focus in 2021



Future Hertfordshire

Joint Strategic Plans;
Climate Change and
Sustainability; Town
centres, Health,
Community wealth-
building and Digital



Hertfordshire Investment Ready

Economic recovery,
performance and resilience
Protecting our communities
from the impact of the virus
on our economy
Creating the conditions for
investment



Hertfordshire Delivery Ready

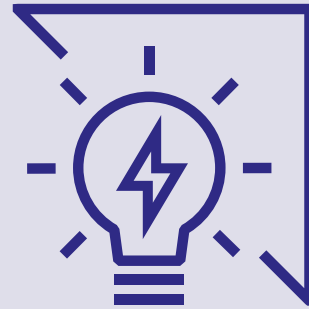
Working together to
deliver the homes
Hertfordshire needs

Economic Strategy Programme - Joined up working with our LEP



A: Economic Fundamentals

- Revised Skills Strategy
- Enterprise and Innovation Strategy



B: High Growth Clusters/Sectors

- Film, TV and creative economy
- Cell and gene/Life sciences
- Advanced engineering and manufacturing
- Sustainable construction
- ICT & digital



C: Foundations for Good Growth

- Digital Strategy
- Low carbon and clean growth
- Inclusive growth

KEY:
July
September
December

Led by Hertfordshire Local Enterprise Partnership (some within oversight of Growth Board/others)

North and South Growth Corridor Programmes

Programme Board focus

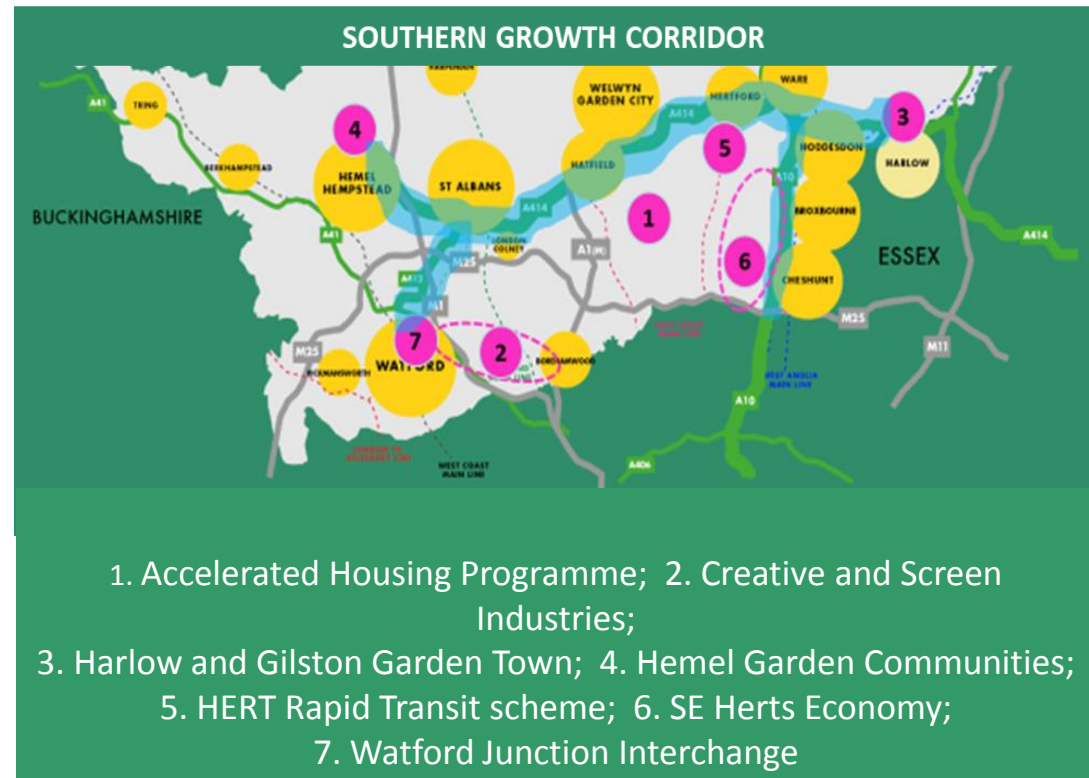
- Programme Boards formed, Jan 2020
- Chaired by Cllr Linda Haysey Leader East Herts Council and Cllr Sharon Taylor Stevenage Borough Council
- Project management support for the programme board, political and CEx leads for each project in place
- Performance oversight and reporting to the Growth Board

Key projects

- Accelerating delivery of the homes Hertfordshire needs
- Strategic sites delivery oversight and advocacy:
 - Harlow Gilston Garden Town
 - Hemel Garden Communities
 - Watford Junction Quarter
- Growing our key economic sectors: Creative and screen industry and Science and Technology (Cell and Gene sector)
- HERT - Hertfordshire and Essex Rapid Transit Scheme project
- Reinvigorating our Town centres
- SE Herts Economic recovery
- Community Wealth Building

Joint Strategic Planning Collaborations

South West Hertfordshire Councils, North, East and Central Herts



Delivering the homes that Hertfordshire

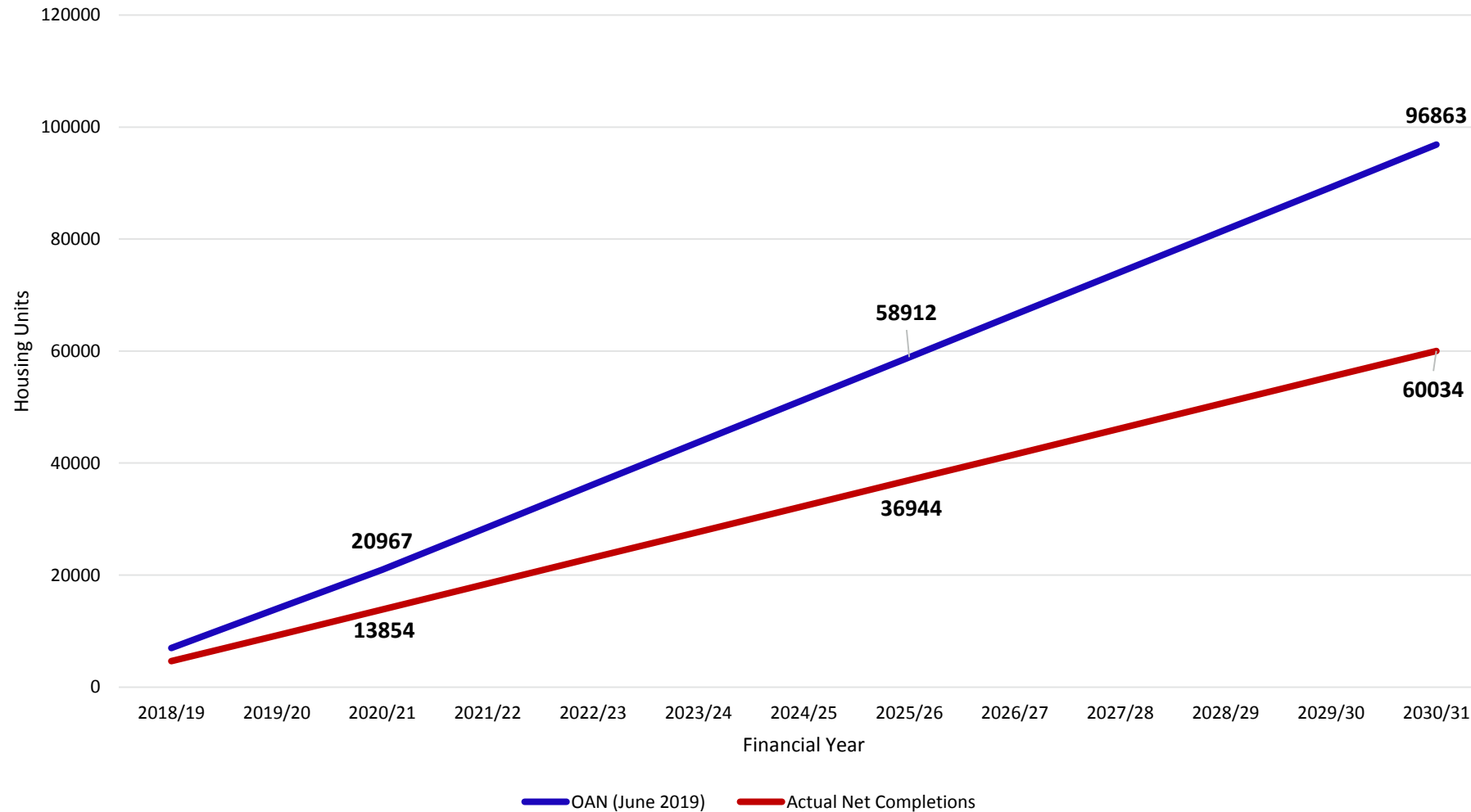
- We still have a broken housing market in Hertfordshire - this section will tell you about some of the work we are doing to help with that.
- The Government has a great focus on housing numbers but the Growth Board commitment is broader, supporting good growth and high quality placemaking as part of the delivery of new homes.
- We have a significant growth agenda to deliver including strategic scale development and regeneration at locations like:
 - Harlow and Gilston Garden Town
 - Hemel Garden Communities
 - Stevenage Town centre
 - Watford Junction Quarter

Award winning housing for older people, Harpenden



Current housing delivery profile

Hertfordshire Housing Need (OAN) against planned and expected delivery



Projected net completions assumes 2019–20 net completion rate of 4,618 units maintained to from 2018 to 2031. Required completions level to reach target is 7,000 units a year

Accelerated off-site manufacturing (OSM)

- Increasing advocacy for OSM products
- Targeting Hertfordshire sites and pipeline
- Developing:
 - delivery protocol
 - Herts Pattern Book
 - Herts priority and demonstrator sites
- Construction transformation work with the University of Hertfordshire, Building Research Establishment and Further Education sector
- Skills and capacity transfer opportunities & apprenticeships



Hertfordshire Climate Change and Sustainability Partnership



Transport



Biodiversity



Water conservation



Carbon reduction





Hertfordshire
Growth Board



www.HertfordshireGrowthBoard.com



[@hertsgoodgrowth](https://twitter.com/hertsgoodgrowth)



Room 204, Hertfordshire County Council, County Hall, Pegs Lane, Hertford SG13 8DE